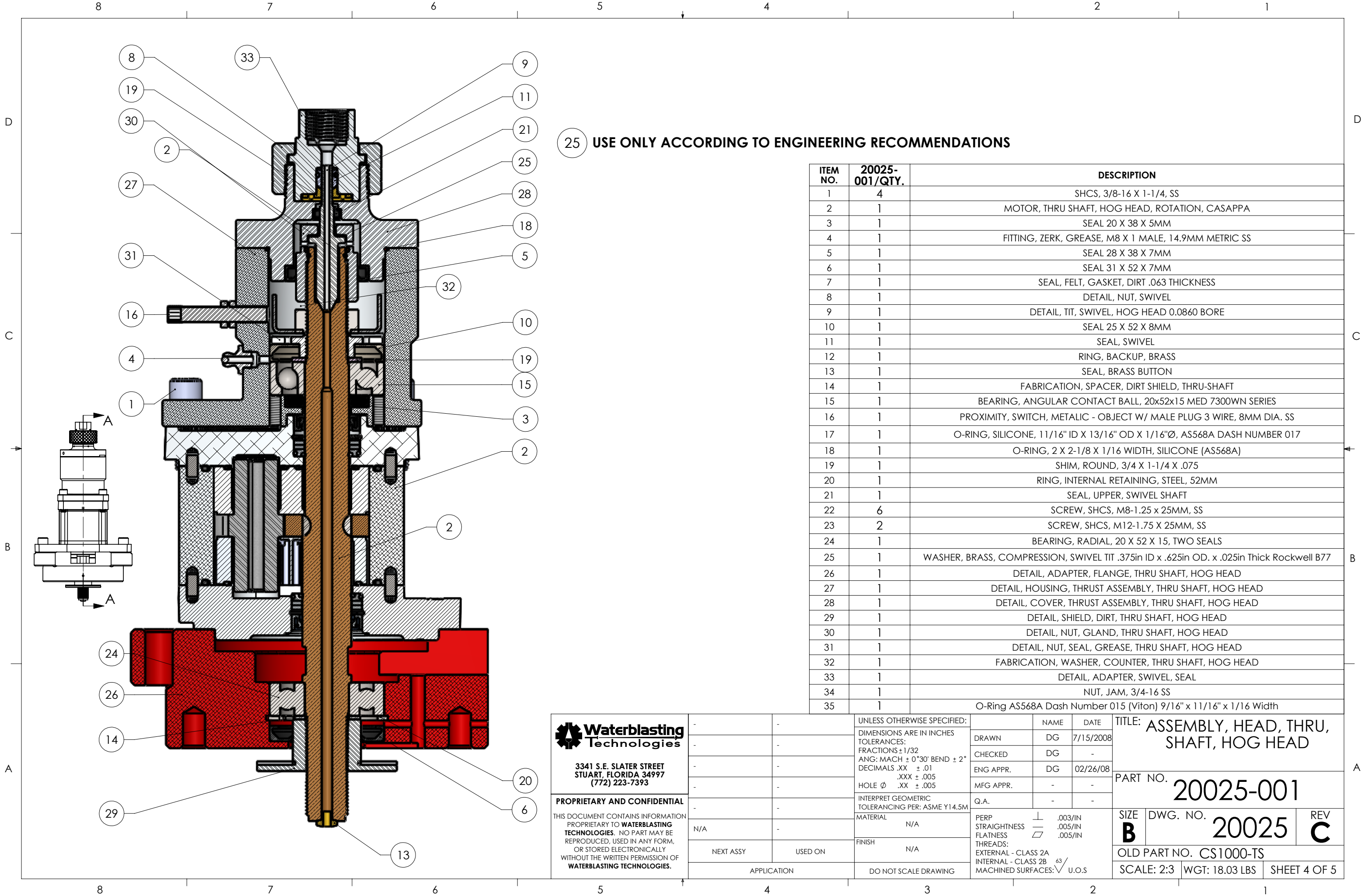



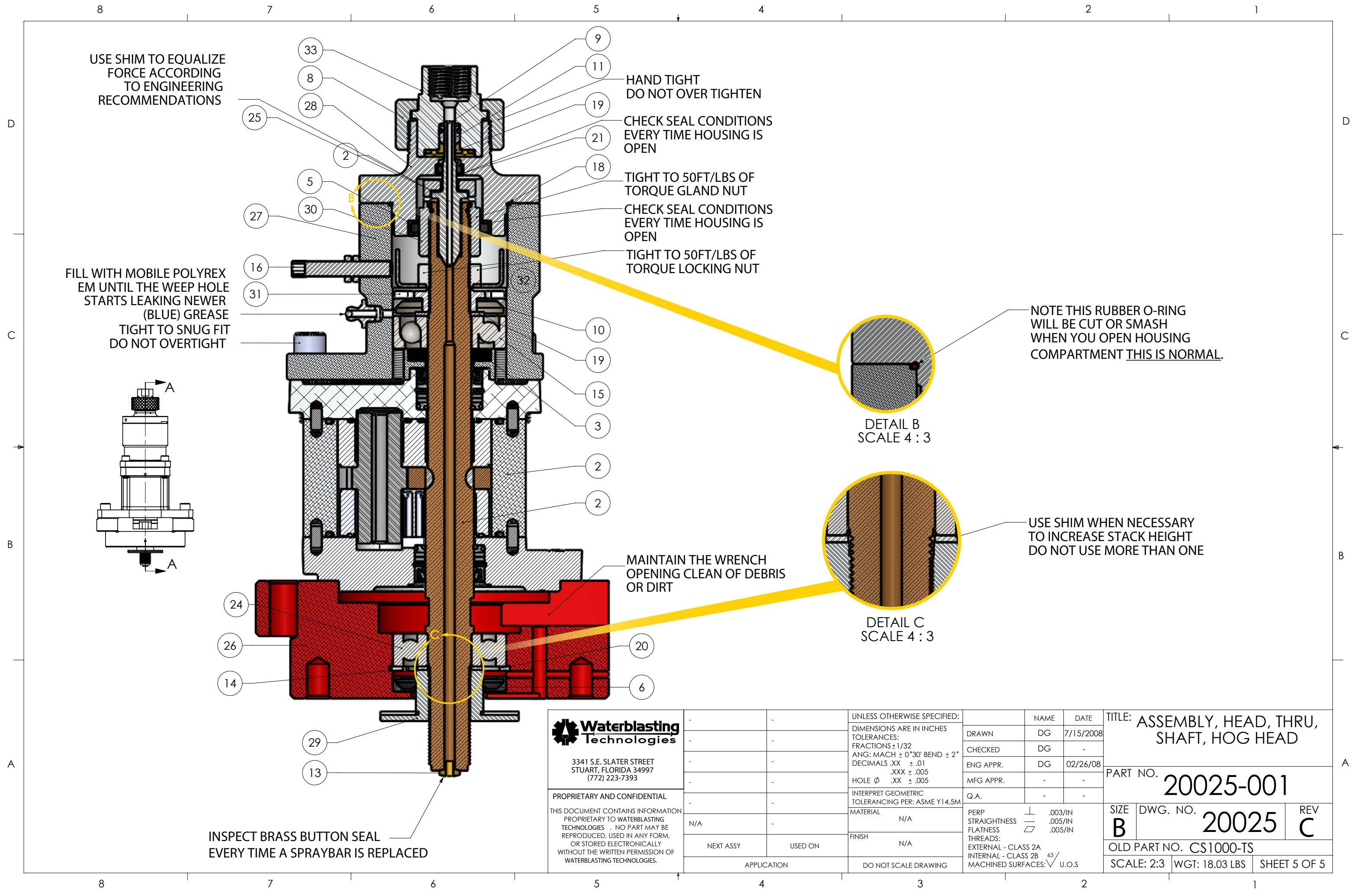
ITEM NO.	20025-001/QTY.	DESCRIPTION
1	4	SHCS, 3/8-16 X 1-1/4, SS
2	1	MOTOR, THRU SHAFT, HOG HEAD, ROTATION, CASAPPA
3	1	SEAL 20 X 38 X 5MM
4	1	FITTING, ZERK, GREASE, M8 X 1 MALE, 14.9MM METRIC SS
5	1	SEAL 28 X 38 X 7MM
6	1	SEAL 31 X 52 X 7MM
7	1	SEAL, FELT, GASKET, DIRT .063 THICKNESS
8	1	DETAIL, NUT, SWIVEL
9	1	DETAIL, TIT, SWIVEL, HOG HEAD 0.0860 BORE
10	1	SEAL 25 X 52 X 8MM
11	1	SEAL, SWIVEL
12	1	RING, BACKUP, BRASS
13	1	SEAL, BRASS BUTTON
14	1	FABRICATION, SPACER, DIRT SHIELD, THRU-SHAFT
15	1	BEARING, ANGULAR CONTACT BALL, 20x52x15 MED 7300WN SERIES
16	1	PROXIMITY, SWITCH, METALIC - OBJECT W/ MALE PLUG 3 WIRE, 8MM DIA. SS
17	1	O-RING, SILICONE, 11/16" ID X 13/16" OD X 1/16"Ø, AS568A DASH NUMBER 017
18	1	O-RING, 2 X 2-1/8 X 1/16 WIDTH, SILICONE (AS568A)
19	1	SHIM, ROUND, 3/4 X 1-1/4 X .075
20	1	RING, INTERNAL RETAINING, STEEL, 52MM
21	1	SEAL, UPPER, SWIVEL SHAFT
22	6	SCREW, SHCS, M8-1.25 x 25MM, SS
23	2	SCREW, SHCS, M12-1.75 X 25MM, SS
24	1	BEARING, RADIAL, 20 X 52 X 15, TWO SEALS
25	1	WASHER, BRASS, COMPRESSION, SWIVEL TIT .375in ID x .625in OD. x .025in Thick Rockwell B77
26	1	DETAIL, ADAPTER, FLANGE, THRU SHAFT, HOG HEAD
27	1	DETAIL, HOUSING, THRUST ASSEMBLY, THRU SHAFT, HOG HEAD
28	1	DETAIL, COVER, THRUST ASSEMBLY, THRU SHAFT, HOG HEAD
29	1	DETAIL, SHIELD, DIRT, THRU SHAFT, HOG HEAD
30	1	DETAIL, NUT, GLAND, THRU SHAFT, HOG HEAD
31	1	DETAIL, NUT, SEAL, GREASE, THRU SHAFT, HOG HEAD
32	1	FABRICATION, WASHER, COUNTER, THRU SHAFT, HOG HEAD
33	1	DETAIL, ADAPTER, SWIVEL, SEAL
34	1	NUT, JAM, 3/4-16 SS
35	1	O-Ring AS568A Dash Number 015 (Viton) 9/16" x 11/16" x 1/16 Width



25 USE ONLY ACCORDING TO ENGINEERING RECOMMENDATIONS

ITEM NO.	20025-001/QTY.	DESCRIPTION
1	4	SHCS, 3/8-16 X 1-1/4, SS
2	1	MOTOR, THRU SHAFT, HOG HEAD, ROTATION, CASAPPA
3	1	SEAL 20 X 38 X 5MM
4	1	FITTING, ZERK, GREASE, M8 X 1 MALE, 14.9MM METRIC SS
5	1	SEAL 28 X 38 X 7MM
6	1	SEAL 31 X 52 X 7MM
7	1	SEAL, FELT, GASKET, DIRT .063 THICKNESS
8	1	DETAIL, NUT, SWIVEL
9	1	DETAIL, TIT, SWIVEL, HOG HEAD 0.0860 BORE
10	1	SEAL 25 X 52 X 8MM
11	1	SEAL, SWIVEL
12	1	RING, BACKUP, BRASS
13	1	SEAL, BRASS BUTTON
14	1	FABRICATION, SPACER, DIRT SHIELD, THRU-SHAFT
15	1	BEARING, ANGULAR CONTACT BALL, 20x52x15 MED 7300WN SERIES
16	1	PROXIMITY, SWITCH, METALIC - OBJECT W/ MALE PLUG 3 WIRE, 8MM DIA. SS
17	1	O-RING, SILICONE, 11/16" ID X 13/16" OD X 1/16"Ø, AS568A DASH NUMBER 017
18	1	O-RING, 2 X 2-1/8 X 1/16 WIDTH, SILICONE (AS568A)
19	1	SHIM, ROUND, 3/4 X 1-1/4 X .075
20	1	RING, INTERNAL RETAINING, STEEL, 52MM
21	1	SEAL, UPPER, SWIVEL SHAFT
22	6	SCREW, SHCS, M8-1.25 x 25MM, SS
23	2	SCREW, SHCS, M12-1.75 X 25MM, SS
24	1	BEARING, RADIAL, 20 X 52 X 15, TWO SEALS
25	1	WASHER, BRASS, COMPRESSION, SWIVEL TIT .375in ID x .625in OD. x .025in Thick Rockwell B77
26	1	DETAIL, ADAPTER, FLANGE, THRU SHAFT, HOG HEAD
27	1	DETAIL, HOUSING, THRUST ASSEMBLY, THRU SHAFT, HOG HEAD
28	1	DETAIL, COVER, THRUST ASSEMBLY, THRU SHAFT, HOG HEAD
29	1	DETAIL, SHIELD, DIRT, THRU SHAFT, HOG HEAD
30	1	DETAIL, NUT, GLAND, THRU SHAFT, HOG HEAD
31	1	DETAIL, NUT, SEAL, GREASE, THRU SHAFT, HOG HEAD
32	1	FABRICATION, WASHER, COUNTER, THRU SHAFT, HOG HEAD
33	1	DETAIL, ADAPTER, SWIVEL, SEAL
34	1	NUT, JAM, 3/4-16 SS
35	1	O-Ring AS568A Dash Number 015 (Viton) 9/16" x 11/16" x 1/16 Width

 <div>Waterblasting Technologies</div> <div>3341 S.E. SLATER STREET STUART, FLORIDA 34997 (772) 223-7393</div>		-	-	UNLESS OTHERWISE SPECIFIED:			NAME	DATE	TITLE: ASSEMBLY, HEAD, THRU, SHAFT, HOG HEAD	
		-	-	DIMENSIONS ARE IN INCHES TOLERANCES: FRACTIONS ± 1/32 ANG: MACH ± 0°30' BEND ± 2° DECIMALS .XX ± .01 .XXX ± .005	DRAWN	DG	7/15/2008			
		-	-	HOLE Ø .XX ± .005	CHECKED	DG	-			
		-	-	INTERPRET GEOMETRIC TOLERANCING PER: ASME Y14.5M	ENG APPR.	DG	02/26/08			
		-	-	MATERIAL N/A	MFG APPR.	-	-			
PROPRIETARY AND CONFIDENTIAL		-	-	FINISH N/A	Q.A.	-	-	PART NO. 20025-001		
THIS DOCUMENT CONTAINS INFORMATION PROPRIETARY TO WATERBLASTING TECHNOLOGIES . NO PART MAY BE REPRODUCED, USED IN ANY FORM, OR STORED ELECTRONICALLY WITHOUT THE WRITTEN PERMISSION OF WATERBLASTING TECHNOLOGIES .		N/A	-		PERP STRAIGHTNESS ± .003/IN FLATNESS ± .005/IN THREADS: EXTERNAL - CLASS 2A INTERNAL - CLASS 2B MACHINED SURFACES: $\sqrt{63}$ U.O.S	SIZE B		DWG. NO. 20025	REV C	
		NEXT ASSY	USED ON			OLD PART NO. CS1000-TS				
		APPLICATION		DO NOT SCALE DRAWING	SCALE: 2:3 WGT: 18.03 LBS SHEET 4 OF 5					



Waterblasting Technologies
3341 S.E. SLATER STREET
STUART, FLORIDA 34997
(772) 223-7393

PROPRIETARY AND CONFIDENTIAL
THIS DOCUMENT CONTAINS INFORMATION
PROPRIETARY TO WATERBLASTING
TECHNOLOGIES. NO PART MAY BE
REPRODUCED, USED IN ANY FORM,
OR STORED ELECTRONICALLY
WITHOUT THE WRITTEN PERMISSION OF
WATERBLASTING TECHNOLOGIES.

-	-	UNLESS OTHERWISE SPECIFIED:
-	-	DIMENSIONS ARE IN INCHES
-	-	TOLERANCES:
-	-	FRACTIONS $\pm 1/32$
-	-	ANG: MACH $\pm 0^{\circ}30'$ BEND $\pm 2^{\circ}$
-	-	DECIMALS .XX $\pm .01$
-	-	.XXX $\pm .005$
-	-	HOLE ϕ .XX $\pm .005$
-	-	INTERPRET GEOMETRIC
-	-	TOLERANCING PER: ASME Y14.5M
N/A	-	MATERIAL N/A
NEXT ASSY	USED ON	FINISH N/A
APPLICATION		DO NOT SCALE DRAWING

	NAME	DATE
DRAWN	DG	7/15/2008
CHECKED	DG	-
ENG APPR.	DG	02/26/08
MFG APPR.	-	-
Q.A.	-	-
PERP STRAIGHTNESS	\perp	.003/IN
FLATNESS	\parallel	.005/IN
THREADS:		
EXTERNAL - CLASS 2A		
INTERNAL - CLASS 2B		
MACHINED SURFACES:	$\sqrt{}$.63 U.O.S

TITLE: ASSEMBLY, HEAD, THRU, SHAFT, HOG HEAD		
PART NO. 20025-001		
SIZE B	DWG. NO. 20025	REV C
OLD PART NO. CS1000-TS		
SCALE: 2:3	WGT: 18.03 LBS	SHEET 5 OF 5